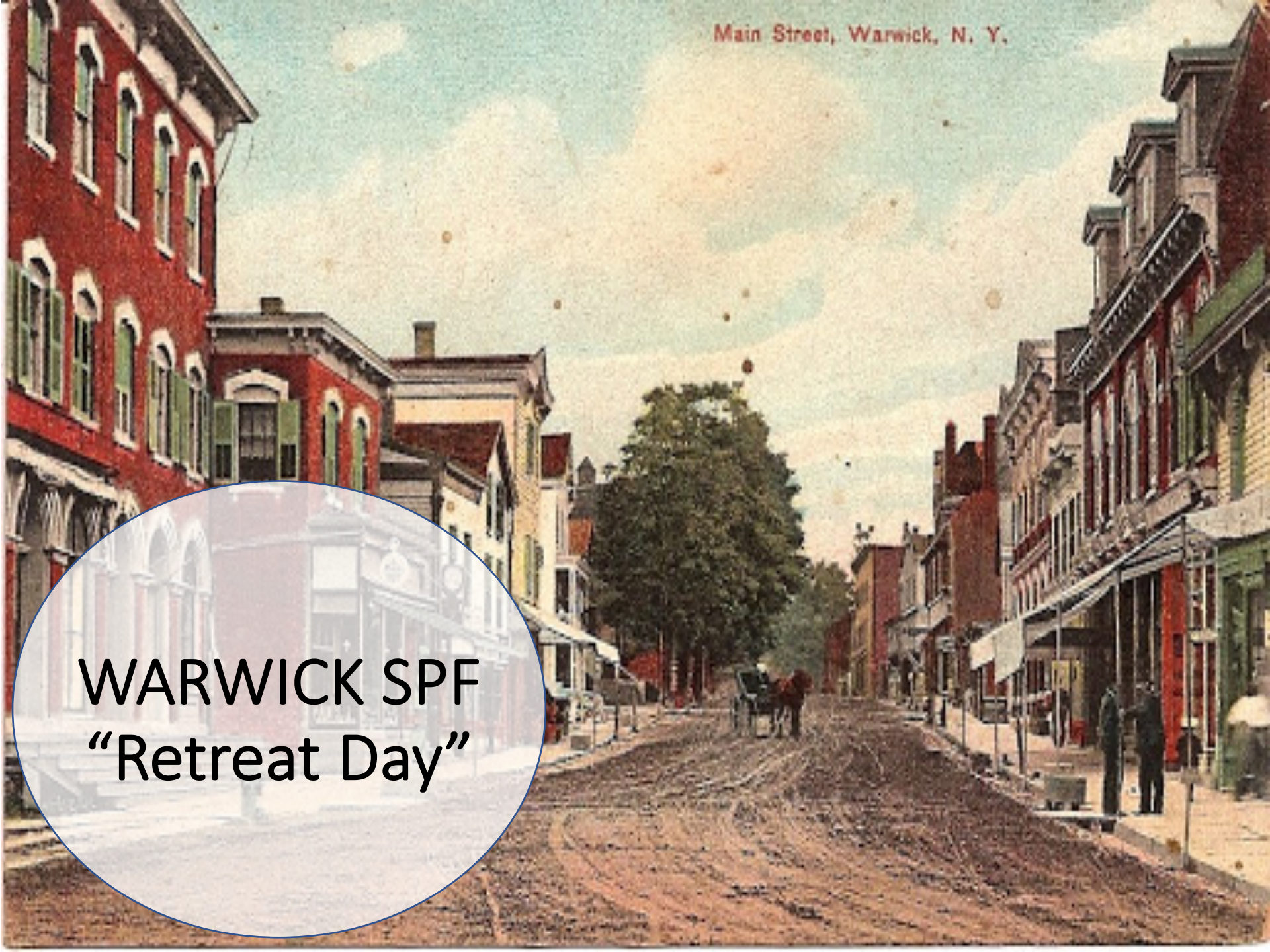


Main Street, Warwick, N. Y.

WARWICK SPF
"Retreat Day"





Introductions

- What is your name?
- What is your profession?
- How many years in your field?
- What do you expect to get from this training?



A voluntary strategic alliance... to enhance our ability **to achieve a common purpose** by sharing risks, responsibilities, resources, and rewards.

“Coalition”



An organized way of doing coalition work

Community Assessment



COMMUNITY
DESCRIPTION



COMMUNITY
HISTORY



NEEDS
ASSESSMENT

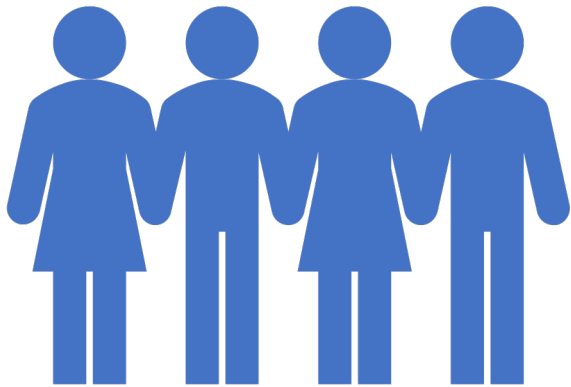


RESOURCE
ASSESSMENT



PROBLEM
STATEMENT

Capacity



- Building Membership
- Building the Coalition's Structure
- Building Coalition Leadership

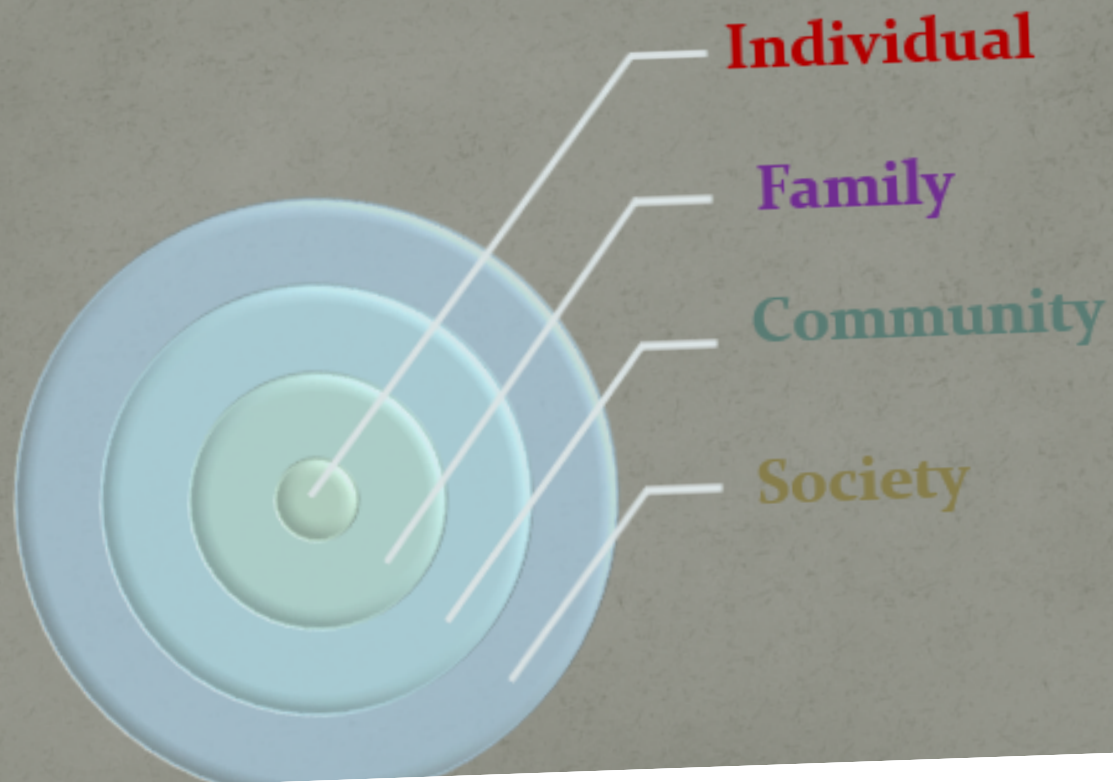
Planning

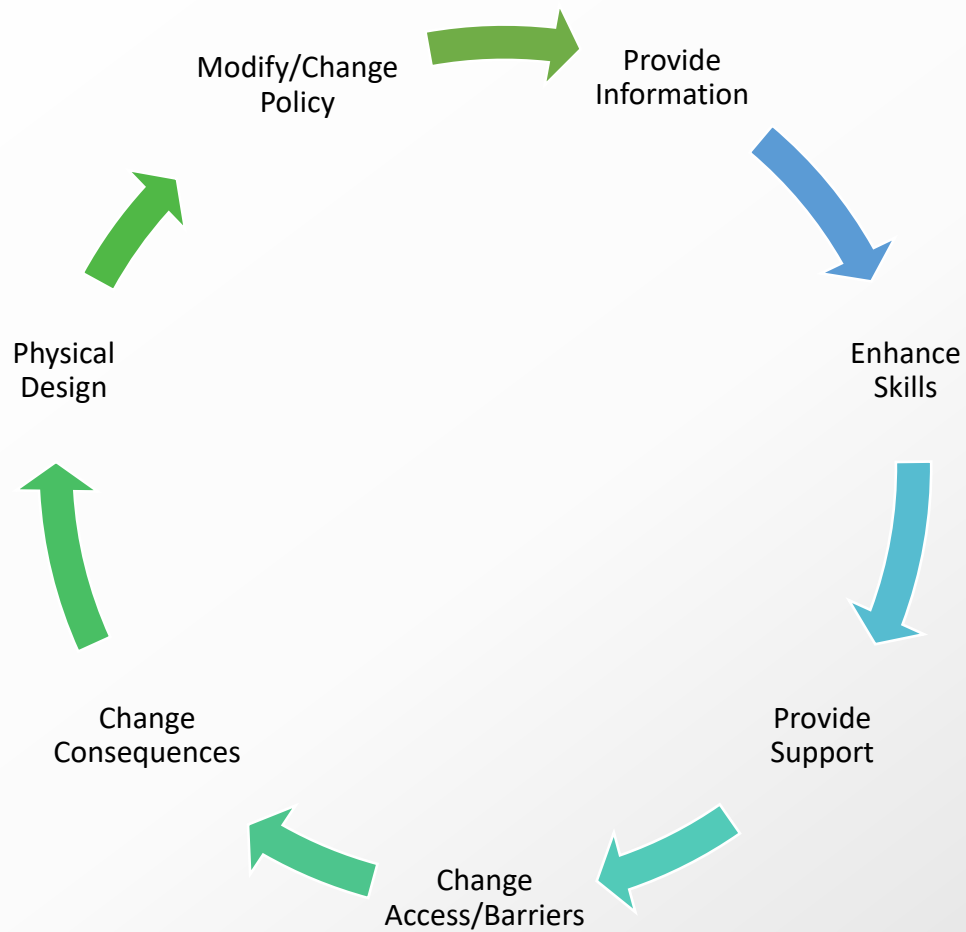
- Problem-> But Why? -> But Why Here?

Focus on Root Causes



Multiple Context





Implementation



Evaluation

- Monitor the community changes
- Collect community change data
 - How will you measure Warwick's change, impact and contribution?

Sustainability

...Enough resources to intervene at the community level and maintain these resources *long enough to create community-level outcomes...*

- Why worry about sustainability?

- Volunteers
- Relevance to community interests and concerns
- Financial and other tangible resources



SPF Vacation

We will use what we learned about the Strategic Prevention Framework to “SPF” a vacation!



Warwick's Mission Statement:

"To reduce alcohol and marijuana abuse among youth and to prevent initiation into all drug use by encouraging wise & healthy decisions by all community members."

Warwick's Logic Model

Long-Term

Problem Statement:
Marijuana use by 8th,
10th and 12th grade
students

Data: 2019 Warwick Valley Central School District Youth Development Survey (WVCSD YDS) 30-Day Use: 8th 13.5%, 10th 22.1%, 12th 37.1%

Warwick Community Center Youth Advisory Board (YAB) 7th to 11th grade, 18 participants, August 2019 questions: "How easy is it to obtain marijuana?" 17: very easy

Intermediate

Root Cause:
Low Perception of Risk
to use Marijuana

Data: WVCSD YDS: Perceives Low Risk to Use Marijuana: 8th 28.6%, 10th 53.8%, 12th 74.2%

YAB: "Do you think that people who smoke, vape, or eat marijuana are harming themselves?" 15: yes, 1: sometimes, 2: don't know

Root Cause:
Availability (Social &
Retail)

Data: WVCSD YDS: Easy to Obtain: 8th 25.8%, 10th 37.1%, 12th 47.62%

YAB: "How hard is it for youth in Warwick to get alcohol or marijuana?" 17: easy, 0: hard

Short-Term

Students vape marijuana in school bathrooms. Youth using marijuana at parties in isolated locations, such as the skatepark.

Data: 2017 Warwick Valley Central School District Violence & Disruptive Incident Report: 7 incidences of drug possession. Key Informant SRO re-ports that some confiscated vapes contain marijuana oils (Monthly reports at Coalition meeting)

Data: Police juvenile arrests: 6 violations given in 2019

On-line purchase by youth of marijuana oils and edibles. Students buy vapes and marijuana oils from peers at school.

Data: Key Informant SRO reports that youth report purchasing marijuana oils on-line (monthly reports at coalition meeting). **Need tracking data!**

Youth focus group reports students purchase online. Need Parent Focus group corroboration.

Data: 2017 Warwick Valley Central School District: Violence & Disruptive Incident Report: 7 incidences of drug possession. Key Informant SRO reports that some confiscated vapes contain marijuana oils (month reports at coalition meeting).



Warwick's Focus

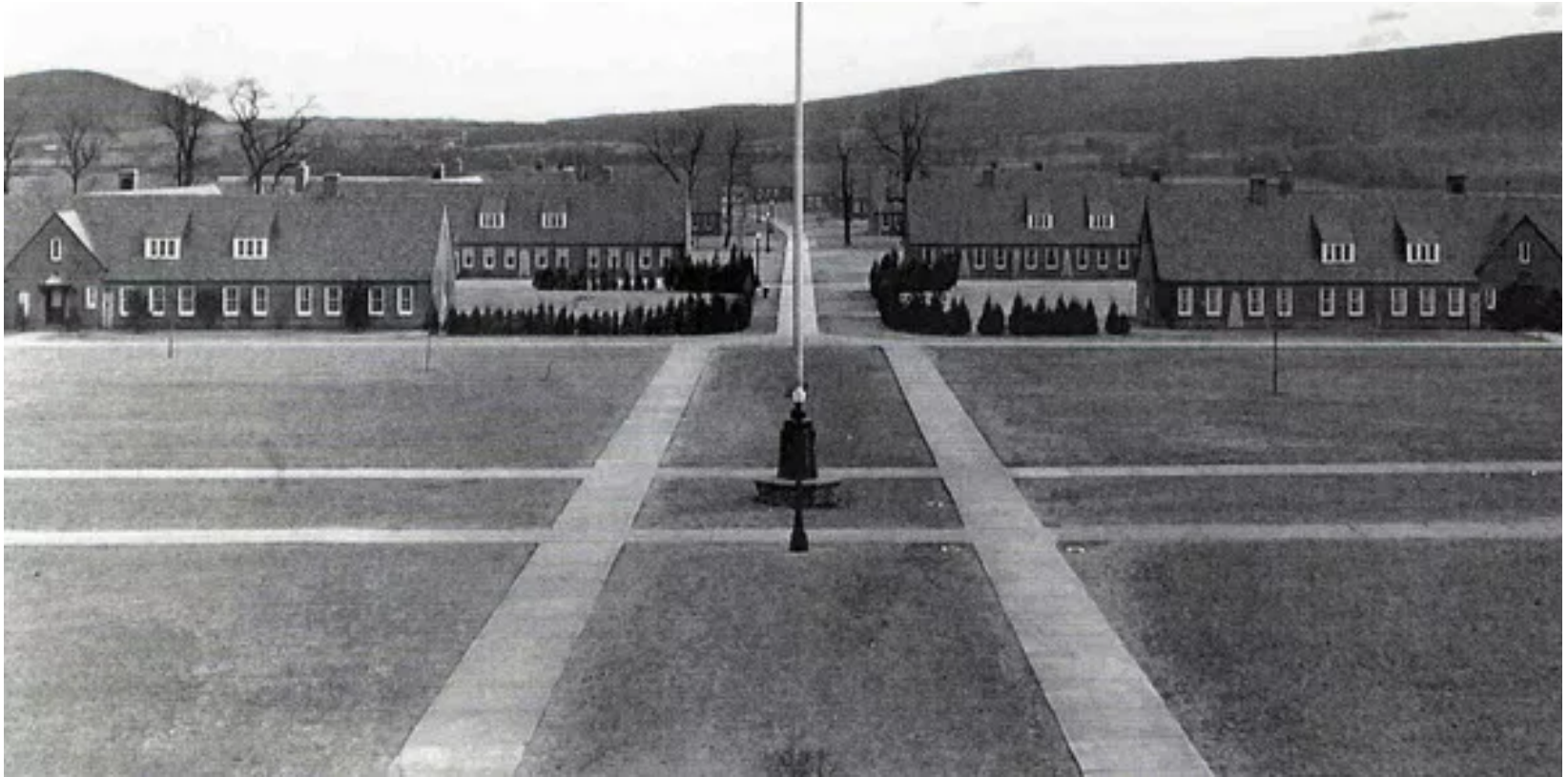
- Capacity
- Planning
- Sustainability
- Evaluation

Capacity Goals

Committees, Roles,
Volunteering

Community Agency
Outreach

Who's Not At The
Table?



- Capacity - Committees, Roles & Volunteering in Warwick's Coalition

- Why Do We Need This? Usefulness?
- Committees Needed (Youth, Outreach, Leadership)
- Roles of Membership – What Are They?
- Volunteering



- Capacity - Roles of Warwick's Coalition

- What are the roles?
- What is my role?
- What does my role entail?

Drug-Free Communities



- Capacity -
DFC Sectors



- Capacity -
SAPST Activity

- Who's Not At The Table?

- Capacity - Building Warwick's Membership

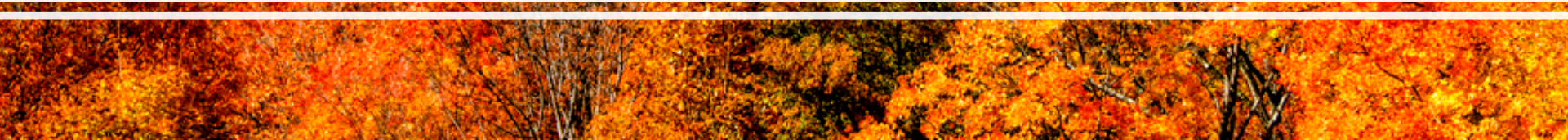
- Faith-Based
- Healthcare

What can we do to build our membership?





Resources + Readiness = Capacity



Planning Goals



What Is Warwick Planning?



Alcohol Logic Model



Responsible Server Training



Community Outreach

- Planning -

What is Warwick Planning?

- What is the coalition working on?
 - Are there any current projects?
- What are some of the emerging issues that need to be taken into consideration?
 - Does the coalition have a re-introduction plan?




- Planning - Responsible Server Training (RST)

- Coalition Coordinator plans the event & MHPRC implements it

COALITION MEMBERS ROLE:

- Gather sellers (outreach committee)
- Flyers to restaurants

What are some ideas for planning in this new virtual world?



Sustainability Goals

What Does It Mean?

What Is Warwick's
Plan?

How Do We Maintain
Our Progress?



- **Sustainability** -
How to Survive
After the
Funding is Gone

- How much longer do we have funding?
- What does this mean?
- How can we maintain our coalition's progress?

Evaluation Goals



Understanding Evaluation



Evaluation for Warwick



No Evaluator Currently, Do We Need One?



Baseline Data & Evaluation Plan

- Evaluation - Evaluating Warwick's Coalition

- No evaluator currently, what does this mean?
- What will Warwick need to evaluate?
- Who will evaluate this?



Demonstrating Warwick's Impact

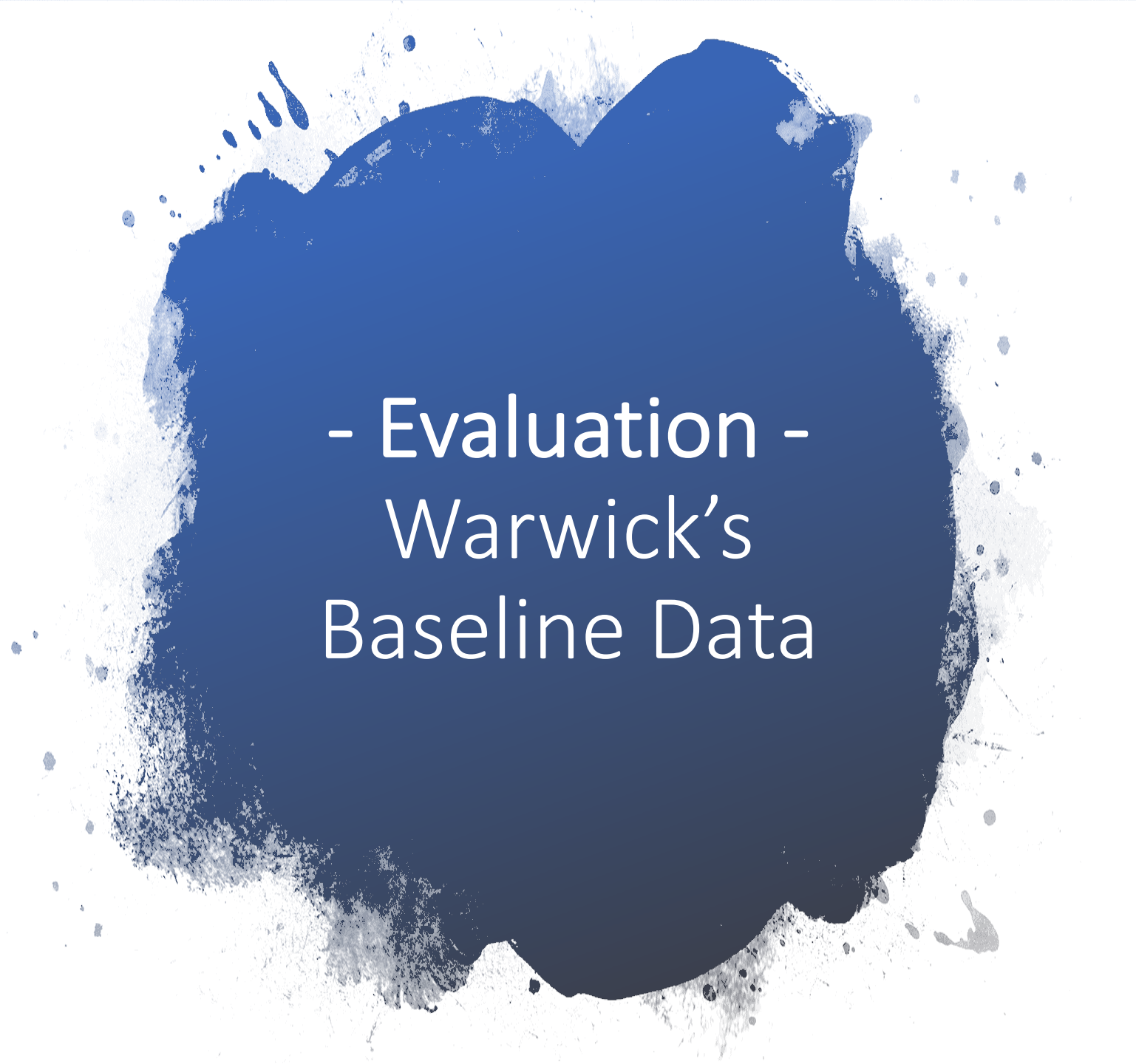
How can you demonstrate Warwick's

- Impact
- Change
- Contribution

How can you make this information salient to your coalition? Community?

Is your information Qualitative or Quantitative?

Can you make the Qualitative more quantitative?



- Evaluation -
Warwick's
Baseline Data

Discussion & Questions

- Jennifer Ocasio, MHPRC Coordinator
 - jocasio@adacinfo.com
- Kaitlyn Kras, Prevention Specialist/Educator
 - kkras@adacinfo.com